

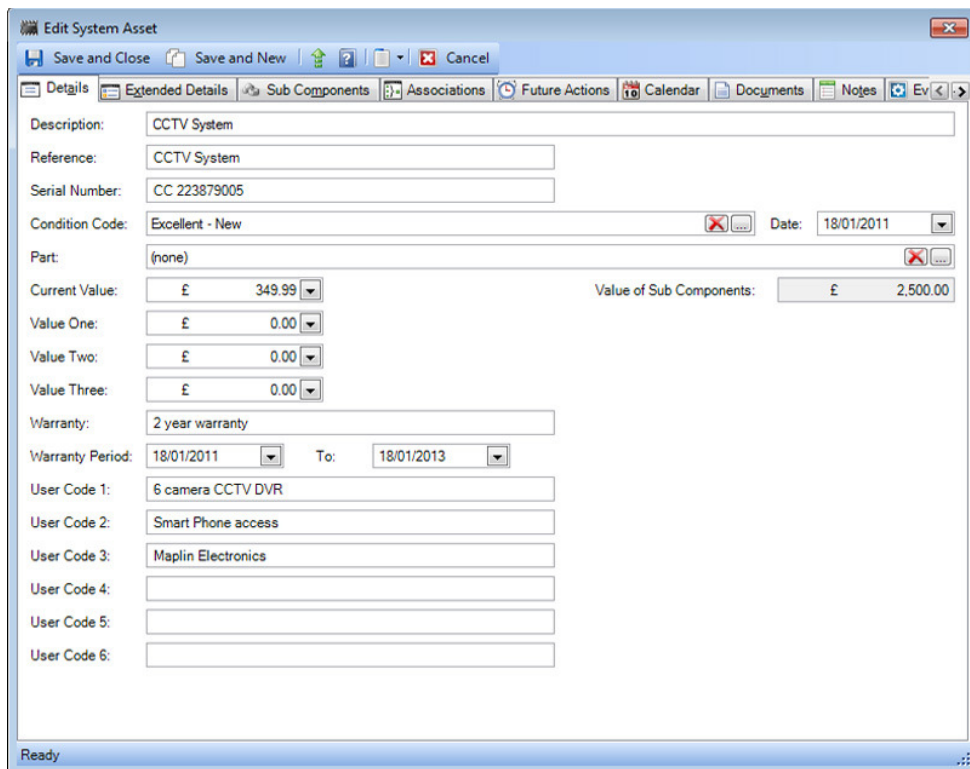
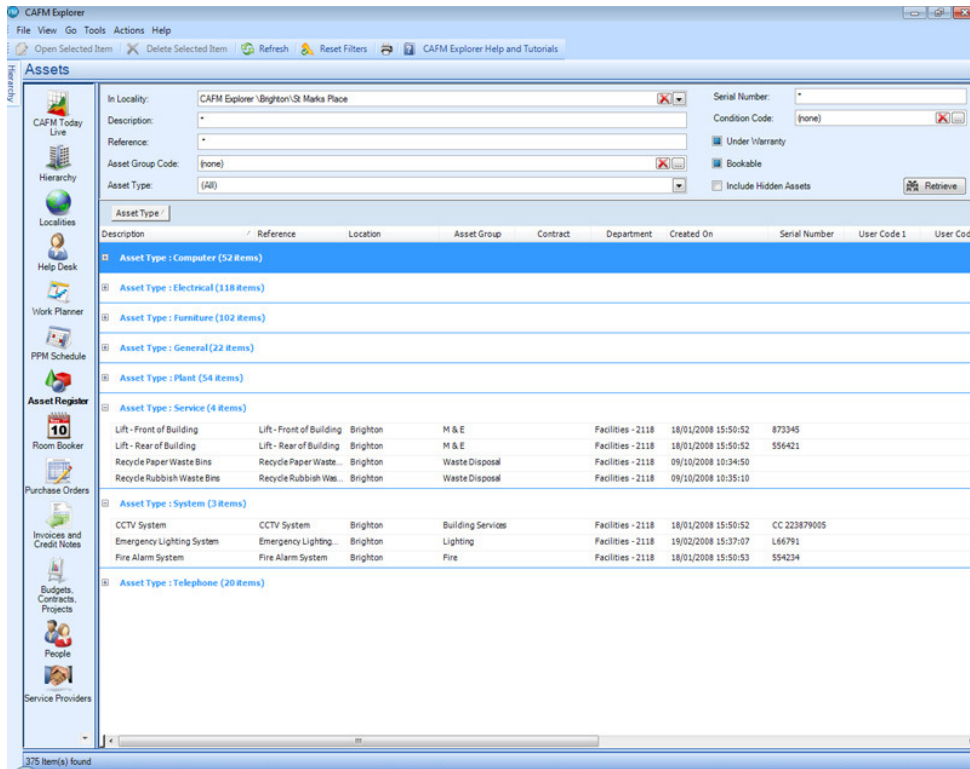
## Asset Tracking



Efficient asset tracking which provides the facility to record, move and manage all of your asset data in an easy to use Asset register or as a tool to link with external asset data. Completely scalable and extensive, detailed information can be saved against each record. Benefits are gained from the integration with other facility data.

### **Key features include:**

- Numerous elements of data storage against assets including: location, warranty, parts and maintenance records.
- Logical grouping of assets for easy storage, retrieval and viewing.
- Calendar view on bookable assets and the ability to book out assets long or short term.
- Link between facilities Help Desk and Planned Maintenance enables full visibility of an assets service history.
- Association of assets to people, departments or locations.
- Integration with other facilities data provides detailed financial and ownership details.
- Movement and tracking of assets either within AutoCAD or CAFM Explorer.
- Asset contract association for automatic issue of related Work Orders to maintaining contractors.
- Easy Export of asset data to 3<sup>rd</sup> party applications, or generation of an asset register.
- Export of asset information to hand-held devices for ease of survey completion.
- Full Asset Reporting available for automatic distribution to interested parties.



If you would like to book a one-to-one product demonstration with one of our Account Managers, please email us or telephone using the details below. If you would like to take a quick tour of CAFM Explorer, please visit our website and click watch a demo, alternatively you may also register to watch one of our webinars which covers various topics of CAFM Explorer. Reserve your seat on our website.