

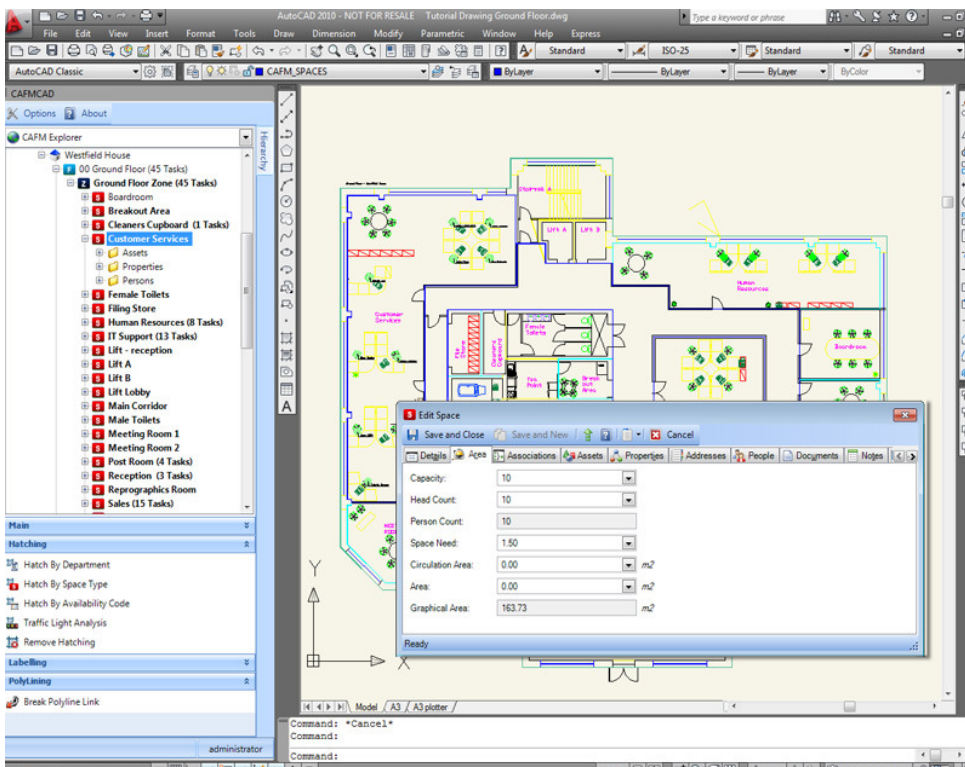
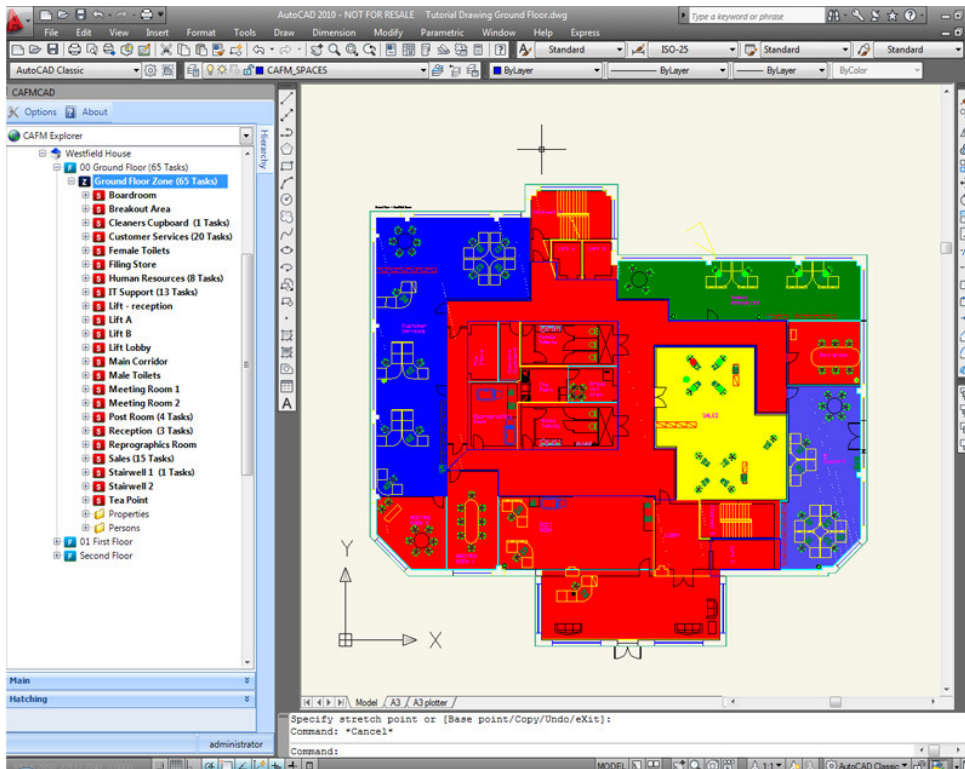
## Space Management



CAFM Explorer makes productive use of AutoCAD on the principal that CAFM Explorers powerful relational database owns and drives up to date data into AutoCAD as simple to-do move and linking tasks. This is driven by automatically pushing data into CAFM Explorer from HR People imports or Asset Spreadsheets. Utilising the CAFMCAD product will provide essential information to assist with space planning and cost recharging.

### **Key features include:**

- Use of familiar AutoCAD tools to detail and manage space allocation.
- Automatic generation of People, Asset and Property tasks in the CAFMCAD palette.
- Work Space markers seamlessly dropped onto the drawing to highlight vacant, occupied, part times and hot desks.
- Map Spaces, Assets and Assign attributes.
- Two way communication between facilities drawings and the database.
- Easily generate a 'Planning drawing' for space planners to plan scenarios.
- Tracking of occupied and Vacant space.
- Automatic hatching and labelling of drawings from CAFM Explorer data.
- Space calculations automatically updated within the database.
- Ability to set up your database to charge departments for the space occupied and apportion shared space.
- Analyse the data using CAFM Reports Explorer.



If you would like to book a one-to-one product demonstration with one of our Account Managers, please email us or telephone using the details below. If you would like to take a quick tour of CAFM Explorer, please visit our website and click watch a demo, alternatively you may also register to watch one of our webinars which covers various topics of CAFM Explorer. Reserve your seat on our website.